

Y Pwyllgor Deisebau

Lleoliad:
Ystafell Bwyllgora 1 – Senedd

Dyddiad:
Dydd Mawrth, 28 Chwefror 2012

Amser:
09:00

Cynulliad
Cenedlaethol
Cymru

National
Assembly for
Wales



I gael rhagor o wybodaeth, cysylltwch a:

Abigail Phillips
Clerc y Pwyllgor
029 2089 8421
Deisebau@cymru.gov.uk

Agenda

- 1. Cyflwyniad, ymddiheuriadau a dirprwyon 09:00**
- 2. Deisebau newydd 09:00–09:10**
 - 2.1 P-04-363 Cynllun i Wella Canol Tref Abergwaun (Tudalen 1)
 - 2.2 P-04-365 Diogelu adeiladau nodedig ar safle hen Ysbyty Canolbarth Cymru (Tudalennau 2 – 4)
 - 2.3 P-04-366 Cau Canolfan Ddydd Aberystwyth (Tudalennau 5 – 6)
 - 2.4 P-04-367 Achub ein gwasanaethau ysbyty (Tudalen 7)
 - 2.5 P-04-368 Annog gweithgarwch corfforol ac iechyd mewn colegau Addysg Bellach (Tudalennau 8 – 27)
 - 2.6 P-04-369 Deiseb yn erbyn y Llwybr Arfordirol o Gaerdydd i Gasnewydd a thu hwnt. (Tudalennau 28 – 29)
- 3. Y wybodaeth ddiweddaraf am ddeisebau blaenorol 09:10–09:30**

Amaethyddiaeth, Bwyd, Pysgodfeydd a Rhaglenni Ewropeaidd

- 3.1 P-04-333 Rhoi diwedd ar esgeuluso a gadael ceffylau a merlod (Tudalennau 30 – 32)

Tai, Adfywio a Threftadaeth

- 3.2 P-03-200 Camlas Morgannwg (Tudalennau 33 – 34)

- 3.3 P-03-317 Cyllid ar gyfer y Celfyddydau Hijinx
(Tudalennau 35 - 45)
- 3.4 P-04-357 Dyrannu Tai Cymdeithasol yng Nghymru (Tudalennau 46 - 48)

Addysg a Sgiliau

- 3.5 P-04-347 Adolygu eiddo ac asedau (Tudalennau 49 - 54)

4. P-04-329 Rheoli swm o dyrbinau gwynt sy'n peri diflastod - sesiwn meic agored 09:30-11:00 (Tudalennau 55 - 57)

Introduction from Grwp Blaengwen Action Group

Stephen Dubé, Chair of Grwp Blaengwen Action Group

Bleddyn Williams, Grwp Blaengwen Action Group Member

Caryl Harris, Grwp Blaengwen Action Group Member

Lynn Morris, Grwp Blaengwen Action Group Member

Terrence Neil, Grwp Blaengwen Action Group Member

Papur i'w nodi

- 4.1 P-04-352 Galwad i Achub Golchdy Stêm y Rhath (Tudalennau 58 - 59)

PET(4)-04-12 p1a

P-04-363 Cynllun i Wella Canol Tref Abergwaun

Geiriad y ddeiseb:

Rydym ni sydd wedi llofnodi isod yn gofyn i'r Cynulliad Cenedlaethol gefnogi'r alwad ar Lywodraeth Cymru i weithio gyda Chyngor Sir Penfro i sicrhau y buddsoddir mewn cynllun i wella canol tref Abergwaun, gan gynnwys mesurau sy'n ymwneud â cherddwyr a rheoli traffig. Mae'n rhaid i gynllun gwella o'r fath wella hyfywedd a chynaliadwyedd y dref a'i gwneud yn gwbl hygyrch i'r holl drigolion ac ymwelwyr, gan gynnwys y rheini sydd ag anghenion o ran symudedd ac anabledau eraill.

Prif ddeisebydd: Cynghorydd Bob Kilmister

Ystyriwyd gan y Pwyllgor am y tro cyntaf: 7 Chwefror 2012

Nifer y deisebwyr: Casglwyd 1,042

Eitem 2.2

PET(4)-04-12 p2a

P-04-365 Diogelu adeiladau nodedig ar safle hen Ysbyty Canolbarth Cymru

Geiriad y ddeiseb:

Rydym yn galw ar Gynulliad Cenedlaethol Cymru i annog Llywodraeth Cymru i restru, neu i ddiogelu mewn ffordd arall, yr adeiladau nodedig ar safle hen Ysbyty Canolbarth Cymru. A hwythau heb eu rhestru, ond wedi'u lleoli yn yr Ardal Gadwraeth, maent yn rhan werthfawr o dreftadaeth bensaernïol a chymdeithasol Talgarth.

Prif ddeisebydd: John Tushingam

Ystyriwyd gan y Pwyllgor am y tro cyntaf: 28 Chwefror 2012

Nifer y deisebwyr: 206

Gwybodaeth ategol: Cafodd Ysbyty Aberhonddu a Sir Faesyfed achlysur agor mawreddog ym 1903. Mae'r coflyfr yn disgrifio'r miloedd o bobl oedd yn bresennol a bod pob twll a chornel o'r adeilad anferthol yn cael ei archwilio. Ar y cyfan, roedd y sefydliad yn rhyfeddod o'i oes. Mae bellach mewn cyflwr truenus, ond mae'r enghraifft bwysig hon o noddfa Edwardaidd cynnar ar ffurf esielon neu saeth, a gynlluniwyd gan Giles, Gough a Trollope, a nodwyd gan Pevsner ac sydd ar gofrestr Adeiladau mewn Perygl SAVE Britain's Heritage, yn gwbl deilwng o'i chadw. Wedi'i lleoli tua hanner milltir o Dalgarth mewn ardal eithriadol o hardd o gefn gwlad ym Mharc Cenedlaethol Bannau Brycheiniog ac Ardal Gadwraeth Talgarth, mae ganddi berthynas arbennig â Thalgarth. Byddai colli unrhyw ran o'r adeiladau gwreiddiol/nodedig yn golled annerbyniol i asedau treftadaeth Talgarth.



Petitions Committee of the Welsh Assembly
Cardiff Bay
Cardiff
Wales
CF99 1NA

Abigail.Phillips@Wales.gov.uk

21 February 2012

Dear Ms Phillips,

Talgarth Hospital, Powys

We write to give our strong support to efforts to save the former mental asylum at Talgarth. SAVE has been closely involved in finding solutions for a large number of mental hospitals being made redundant since we published the first comprehensive survey of the architecture of mental hospitals, *Mind Over Matter* in 1995. In our experience these large Victorian and Edwardian hospitals are eminently suitable for reuse. Almost all of them are built on fine south-facing sites to ensure there was constant fresh air and sun in the wards.

They are often laid out on impressive formal geometric plans. The hospital at Talgarth is on an arrow-shaped or echelon plan which gives all the wards good views out over the beautiful surrounding countryside. In addition, the small courtyards behind provide shelter from wind and intimacy of a small village.

We wish to point to three very successful examples of reuse of hospitals built on similar plans.

The first is the former Exe Vale Hospital outside Exeter. This is built on a radial plan and fell into a very serious state of decay considerably worse than Talgarth. It was nonetheless successfully rescued and converted as a mixture of flats and houses by the development company, Devington Homes. The hospital now makes extremely attractive homes for families and retired people and every unit has been sold. The following link - <http://www.devingtonhomes.co.uk/devington-park.php> illustrates how handsome the buildings now look, how attractive the homes are within and also shows the very well managed landscape around the hospital.

The second example is the former hospital at Moorhaven which is on the edge of Dartmoor National Park and is therefore very comparable to Talgarth. This has been successfully converted to a village community with houses and cottages in the former ward buildings and communal facilities in the hall, chapel etc.

The third is the former Warley Hospital outside Brentwood, Essex. This is laid out on an intricate plan of three-sided courtyards comparable to the layout at Talgarth. The courtyards have not been used for parking but have been planted as gardens providing an extremely attractive approach and outlook for the houses. A similar plan could be adopted at Talgarth.


The Talgarth Hospital buildings are situated in a conservation area and there should be a strong presumption in favour of retention. We urge your authority to resist any application for demolition of the original stone-built hospital buildings. Completed in 1903 these are well and substantially built and all of a piece built to a carefully considered plan by the architects, Giles, Gough and Trollope.

The situation of the hospital outside Talgarth in the National Park means that a substantial residential development can be created without the need for new buildings that might be out of character in the park. There is also potential for a number of holiday lets which would encourage tourism to the area. Self-catering accommodation is becoming increasingly popular in all holiday destinations notably in Wales.

A number of the Talgarth buildings would adapt extremely well to this use.

A scheme along the lines we propose would leave the hospital surrounded by lawns and its attractive landscape setting would remain as it was when it was first designed. This is an exceptional opportunity to preserve a substantial complex of historic buildings in their original setting.

Yours sincerely,



Marcus Binney
President, SAVE Britain's Heritage

Cc: Abigail Phillips, Petitions Committee Clerk, National Assembly for Wales~
Petitions, National Assembly for Wales
John Tushingham, MWHAANG Secretary
Virginia Brown, MWHAANG

PET(4)-04-12 p3a

P-04-366 Cau Canolfan Ddydd Aberystwyth

Geiriad y ddeiseb:

Rydym ni, y rhai sydd wedi llofnodi isod, yn galw ar Lywodraeth Cymru i ystyried a yw'r cynlluniau i symud y gwasanaeth gofal dydd ar gyfer pobl hŷn sy'n agored i niwed o'r Ganolfan Ddydd, sef adeilad 30 mlwydd oed a adeiladwyd i bwrpas, i lawr isaf hen adeilad a oedd yn arfer cael ei ddefnyddio fel Neuadd y Dref yn Aberystwyth yn cydymffurfio â gofynion statudol a chanllawiau perthnasol. Mae'r Cyngor Sir yn bwriadu dymchwel y Ganolfan fel rhan o ddatblygiadau i adeiladu maes parcio, archfarchnad a siopau.

Prif ddeisebydd: Pamela Ellis

Ystyriwyd gan y Pwyllgor am y tro cyntaf: 28 Chwefror 2012

Nifer y deisebwyr: 10 (Casglwyd deiseb gysylltiedig tua 6,000 o lofnodion)

Gwybodaeth ategol: Mae'r Ganolfan Ddydd bresennol yn gyfleuster tua 30 mlwydd oed a gafodd ei adeiladu i bwrpas. Mae wedi'i lleoli mewn safle cyfleus yng nghanol y dref, ac mae mynediad rhwydd iddi. Mae digon o le yno i ollwng pobl ac mae ger croesfan ddiogel. Mae'n adeilad braf a golau gyda digon o le i 90 cleient ag anghenion amrywiol. Mae nifer o ystafelloedd digon o faint yn yr adeilad. Mae'r ganolfan arfaethedig yn llai na hanner y maint ac ond yn addas ar gyfer 32 cleient mewn un ystafell fawr. Ar hyn o bryd, mae'r ganolfan yn galluogi i ofalwyr cleientiaid anabl neu bobl sydd wedi cael strôc gael gofal seibiant dau neu dri diwrnod yr wythnos. Teimlwn y bydd symud y Ganolfan yn gwahaniaethu yn erbyn y grŵp gan fod y Gwasanaethau Cymdeithasol eisoes yn asesu a chyfeirio llai o bobl ar gyfer gofal seibiant. Mae'r Cyngor wedi cyfaddef y bydd toriadau.

Oherwydd anawsterau o ran cael mynediad at y llawr isaf, mae ramp serth wedi'i adeiladu tu allan, sy'n troi ar ongl o 180 hanner ffordd i lawr. Teimlwn yn gryf y bydd y ramp yn achosi problemau anferth i ofalwyr a phobl sy'n defnyddio cadeiriau olwyn pan fydd tywydd stormus neu pan fydd hi wedi rhewi. Mae nenfwd y llawr isaf yn isel ac mae colofn fawr ynghanol yr ystafell sy'n ei gwneud hi'n anodd symud cadeiriau olwyn a throliau. Nid oes llawer o olau naturiol am fod yr ystafell yn rhannol o dan ddaear ac mae'n rhaid mynd trwy lawer o ddrysau er mwyn cyrraedd y toiledau.

Mae cegin newydd ardderchog yn yr hen ganolfan sy'n darparu prydau da. Mae'r clwb cinio wythnosol, a oedd yn gynllun cynhwysiant cymdeithasol gwerthfawr, eisoes wedi dod i ben. Yn y dyfodol, bydd prydau'n cael eu

paratoi oddi ar y safle ac yna eu cludo i'r ganolfan. Dim ond un ystafell fydd ar gael ar gyfer bwyta a'r holl weithgareddau eraill, felly bydd lle yn gyfyng iawn. Mae Gwasanaeth Gwirfoddol y Merched yn lleol yn darparu diodydd a byrbrydau ar hyn o bryd, ond bydd hynny'n dod i ben.

Mae gan y ganolfan bresennol ystafell ymolchi fawr gyda theclyn codi a chyfleusterau golchi dillad, sydd yn gyfleusterau gwerthfawr. Bydd gan y ganolfan newydd gawod wedi'i gosod mewn tŷ bach, er mwyn gallu rhoi cymorth wrth ymolchi, gyda'r drws yn agor i ardal gyffredin. Hwnnw fydd yr unig dŷ bach sy'n addas ar gyfer pobl anabl, felly bydd yn anodd i gleient anabl ddefnyddio'r tŷ bach pan fydd cleient arall yn cael cawod. Os bydd y cyfleuster newydd ddim ond yn gallu gwasanaethu 32 cleient bydd y bobl sydd angen gofal seibiant yn cael blaenoriaeth dros y bobl hŷn sy'n gwerthfawrogi'r cyfle i ddod i'r ganolfan i fwynhau cymdeithasu, cymryd rhan mewn gweithgareddau, cael bath a phryd da o fwyd. Mae gan y ganolfan bresennol ardd braf gyda seddi, digon o lefydd parcio, man i ollwng pobl ac mae mynediad i'r adeilad yn rhwydd i bawb.

Mae'r ganolfan bresennol ar gael gyda'r hwyr ar gyfer grwpiau pobl hŷn. Mae'r grŵp gofal arthritis yn pryderu na fyddant yn gallu ymdopi gyda defnyddio'r ramp yn y tywyllwch ar gyfer eu cyfarfodydd gyda'r hwyr. Mae'r ganolfan newydd ger troad peryglus ar brif ffordd brysur. Roedd y bobl oedd yn defnyddio'r llawr isaf pan oedd yr adeilad yn Neuadd y Dref yn cwyno ei fod yn rhy boeth yn yr haf ac yn oer a llaith yn y gaeaf. Mae'r system wresogi wedi'i gwella, ond ni fydd y ffenestri codi yn cael eu newid ac ni fydd aerdymheru yn cael ei osod. Er bod y Cyngor Sir wedi gwneud ymdrech i ymateb i'n pryderon, credwn yn gryf bod y ganolfan newydd arfaethedig yn hollol anaddas ac yn llawer israddol na'r ganolfan bresennol. Hoffwn ychwanegu bod y Cyngor yn cyfaddef na chynhaliwyd ymgynghoriad priodol. Dyna'r rheswm y cafodd y garfan bwyso hon ei chreu.

PET(4)-04-12 p4a

P-04-367 Achub ein Gwasanaethau Ysbyty

Geiriad y ddeiseb:

- Rydym ni, y rhai sydd wedi llofnodi isod, am weld ein HOLL wasanaethau iechyd lleol yn cael eu cynnal a'u diogelu yn Ysbyty'r Tywysog Phillip.
- Rydym yn gwrthwynebu'r bwriad i israddio'n hysbyty.
- Gofynnwn i'r Gweinidog Iechyd a Llywodraeth Lafur Cymru adolygu'u cynlluniau fel mater o frys.

Prif ddeisebydd: Rhydwyn Ifan

Ystyriwyd gan y Pwyllgor am y tro cyntaf: 28 Chwefror 2012

Nifer y deisebwyr: Tua 3,000 o lofnodion

Eitem 2.5

PET(4)-04-12 p5a

P-04-368 Annog gweithgarwch corfforol ac iechyd mewn colegau Addysg Bellach

Geiriad y ddeiseb:

Rydym yn galw ar Gynulliad Cenedlaethol Cymru i annog Llywodraeth Cymru i hyrwyddo gweithgarwch corfforol ac iechyd mewn colegau Addysg Bellach.

Prif ddeisebydd: Alun Jones

Ystyriwyd gan y Pwyllgor am y tro cyntaf: 28 Chwefror 2012

Nifer y deisebwyr: 23

Gwybodaeth ategol: Gall Gweithgarwch Corfforol fod yn gyfrwng i wella a chynnal nid yn unig priodoleddau corfforol unigolion ond hefyd eu hiechyd a'u lles yn gyffredinol. Rwy'n credu bod angen i Golegau Addysg Bellach osod amcanion a thargedau clir i gynyddu'r nifer sy'n cymryd rhan mewn gweithgarwch corfforol a chwaraeon yn ystod eu hamser hamdden drwy greu rhaglen strwythuredig, gynhwysol a difyr sy'n uno ac yn cynnwys y myfyrwyr ac sy'n addasu l'w hanghenion. Drwy wella iechyd cyffredinol myfyrwyr, gellir gwella nid yn unig perfformiad y coleg, ond perfformiad Cymru gyfan. Mae gennym ddyletswydd nid yn unig i hyrwyddo gweithgarwch corfforol, iechyd a lles, ond hefyd i gymryd camau pendant i gyfrannu at raglenni a fydd yn ysbrydoli'n myfyrwyr i fyw'n iachach ac i gymryd rhan yn amlach mewn gweithgarwch corfforol.

Rwy'n credu bod bwlch eang a gwendid amlwg yn y modd y caiff gweithgarwch corfforol ac iechyd ei hyrwyddo mewn colegau Addysg Bellach. Mae angen strategaeth a chanllawiau clir i golegau eu dilyn. Mae gennym ddyletswydd i geisio hyrwyddo gweithgarwch corfforol ac iechyd ymhlith ein myfyrwyr er mwyn gwella iechyd cyffredinol ein cenedl.



Physical Activity, Health & Lifestyle in Cardiff & Vale College

Strategy for Development

December 2011

Contents;

- 1. Introduction**
- 2. Primary Research & Data**
- 3. Key Areas of Focus**
- 4. Conclusion**
- 5. Bibliography**
- 6. Appendices**

1. Introduction;

What the College aims to achieve:

‘Physical Activity has the ability to enhance & maintain not only the physical attributes of an individual but their overall health & wellbeing. The College aims to increase participation in physical activity & recreational sports through a well structured, inclusive and fun programme that unites, includes & adapts to the needs of the learners. The overall health of students can provide many benefits to the performance of not only the college but Wales as a whole. We do not only have a duty to promote physical activity, health & wellbeing but to actively seek involvement in programmes that will inspire our students to become healthier & more physically active.’ (Alun Jones, Lecturer in Public Services, Cardiff & Vale College, 2011)

“There is widespread evidence that the benefits of increased physical activity will contribute to better education and lifelong learning, socio-economic regeneration and reduced crime as well as promoting Wales on the world stage and most important of all, improvement to the health of the people of Wales.” (Climbing Higher – Next Steps, Welsh Assembly Government, 2006a)

The main reason for this development strategy is to maximise the participation of students in physical, sporting and recreational activities across Cardiff & Vale College. Inactivity levels and obesity rates are increasing throughout Wales. According to NHS statistics 57% of adults in Wales are classed as overweight or obese and estimations predict that within 10 years that figure could rise to 85% (5). More specifically it has been found that 53% of adults in Cardiff are overweight or obese (11). It is commonly known that physical activity levels decrease with age. In light of this extracurricular physical activity and sport within the college becomes increasingly important.

As stated by the Welsh Assembly Governments social research department, over three quarters of 16 year olds take part in extra-curricular sport and physical recreation within school (8). However the level of inactivity in Wales for those no longer in education is one of the highest in the UK, with estimates suggesting only 36% of males and 22% of females participate in the recommended levels of activity (9). Therefore the college needs to ensure that levels of physical activity and participation in sport amongst our students are of prime importance.

Physical activity and sport can be at the forefront of the colleges’ commitment to improving the health and lifestyle of students. It is also widely recognised that sport and physical activity are important for the development of social interaction skills amongst people. Thus by increasing participation will enable students to improve social skills such as speaking, listening, teamwork, leadership as well as maintaining their own personal health. The overall strategy aims to maximise the contribution that physical activity and sport can have on the well-being and development of our students.

WHAT ARE THE PHYSICAL ACTIVITY GUIDELINES?

Adults

The current Department of Health guidance recommends that adults accumulate 30 minutes of moderate intensity physical activity at least five times per week (5 x 30). The key points underlying this guidance are:

- Moderate activity can be characterised by breathing slightly harder and feeling slightly warmer than normal e.g. a brisk walk
- 30 minutes can be accumulated throughout the day in shorter bursts of 10-15 minutes
- A wide range of activities is beneficial including walking, cycling, dancing, gardening etc
- These guidelines are the minimum required to achieve health benefits

Children and Young People

Children and young people need more physical activity and it is therefore recommended by the Department of Health that they should participate in physical activity of at least moderate intensity for one hour every day (5 x 60). This can be made up from a variety of activities across the day, including organised sport, play, walking to school, physical education, or planned exercise.

(Source: Cardiff Physical Activity & Health Strategy, 2008-2011)

2. Primary Research & Data

Background

As a college we should be providing the opportunity for students to participate in the correct levels of physical activity in light of government targets. As previously mentioned college students should be engaged in moderate to vigorous intensity physical activity for at least 60 minutes every day (10), yet alarmingly it has been found that 53% of adults in Cardiff are considered overweight or obese (11).

Considering that Cardiff and Vale College attracts the majority of students from this demographic area it is highly important we develop a strategic plan to counter act these statistics. There are many benefits to participating in physical activity for young people of this age group, reduced body fat, reduced risk of CHD, obesity & mental health issues. There is also the element of educating students on not only the risks but more importantly the benefits of taking part in physical activity for long term prosperity.

Objective

The pilot study was completed with the aim of finding out how much exercise students aged 16-19 participate in over the duration of a week. In addition to this a key target was to identify whether students felt the college was proactive in encouraging participation in physical activity and sport.

Method

A questionnaire was created consisted of 2 key questions relating to the research objective. A copy of the questionnaire can be found in appendix 1.

Participants

An opportunity sample of 213 students from the Faculty of Sport & Community studies took part in the research. Students from the following areas of the faculty took part in the pilot study; Sport, Public Services, Health & Social Care, Child Care, Travel & Tourism and Catering & Hospitality. Prior to completion of the questionnaire, students were told the purpose of the research so that informed consent could be gained. In addition to this they were ensured that all responses would be anonymous and confidential in order to increase the validity of responses.

Results

Fig 3.1

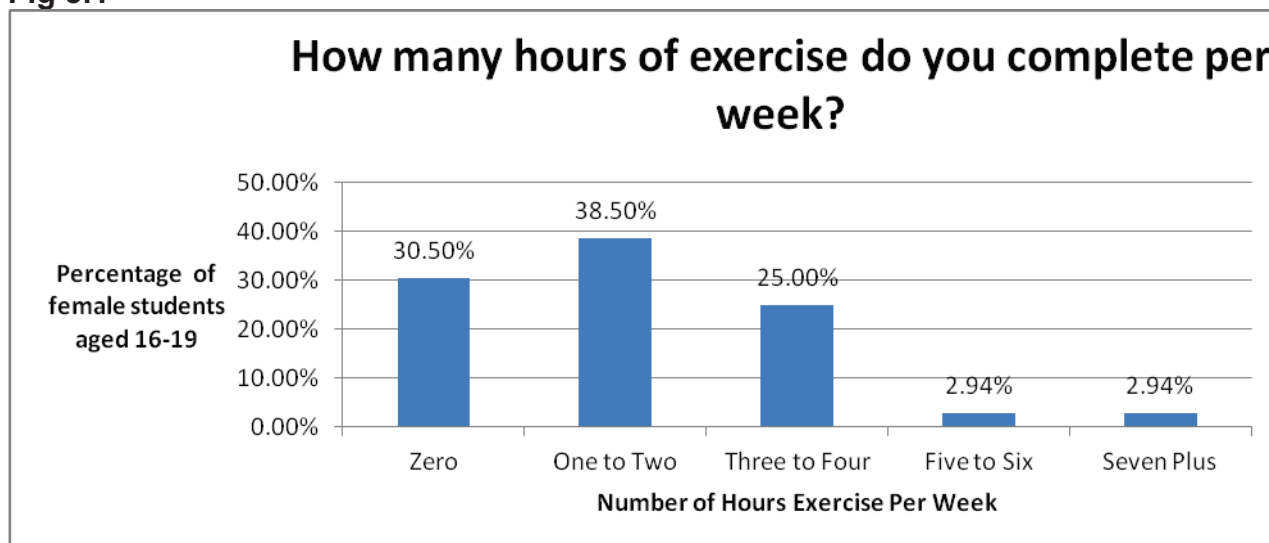


Fig 3.1 demonstrates that the majority of females (38.5%) aged 16-19 exercise 1-2 hours per week. Fig 3.1 also shows that only 6% of females aged 16-19 take part in the Welsh Assembly Governments recommendation of 5 + hours of physical activity per week (1).

Fig 3.2

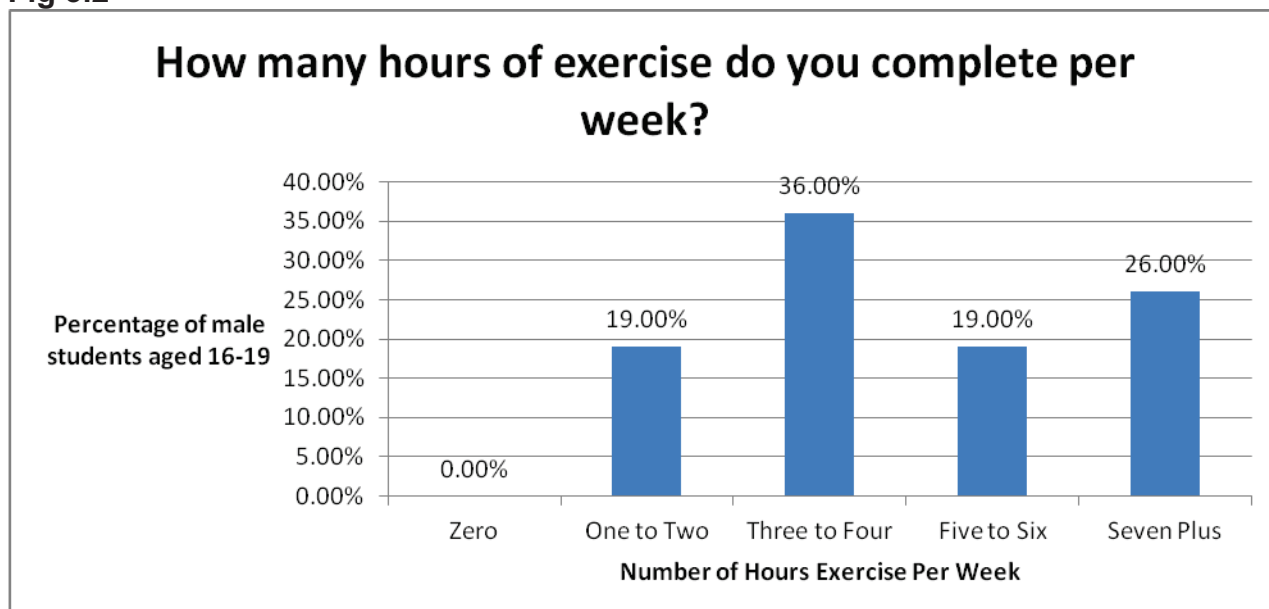


Fig 3.2 demonstrates that the majority of male students aged 16-19 exercise 3-4 hours per week (36%). Fig 3.2 also shows that 45% of males take part in the Welsh Assembly Governments recommended 5+ hours per week of physical activity. The main reason for the high percentage of activity levels amongst males could be due to the course they study. For example out of the 43 males who filled in the questionnaire, 40 were studying a sport or public services course which has physical activity and participation in sport incorporated into the course.

Fig 3.3

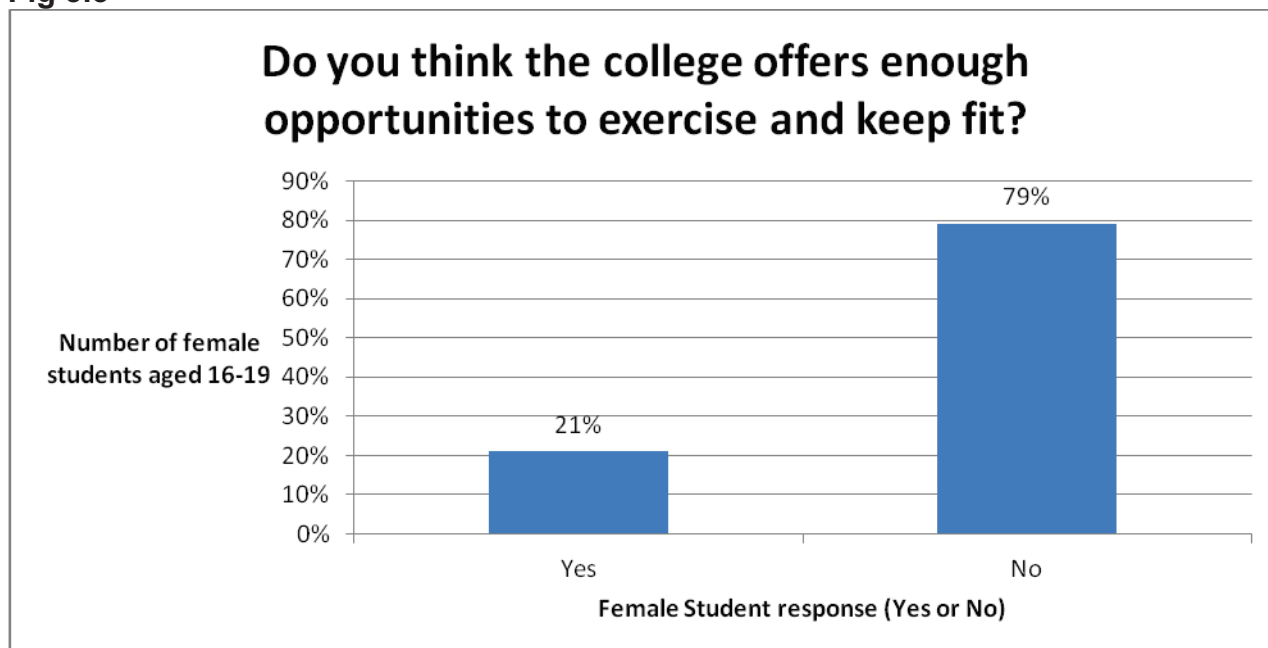


Fig 3.3 demonstrates that 79% of female students aged 16-19 felt that the college does not offer enough opportunities to keep fit and healthy.

Fig 3.4

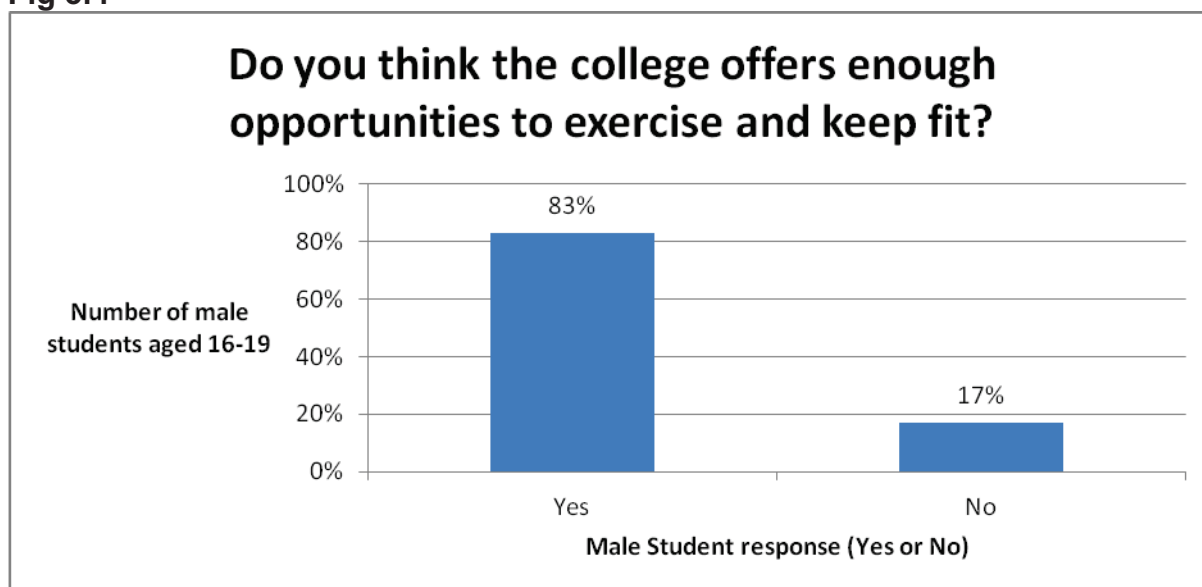


Fig 3.4 demonstrates that 83% of male students aged 16-19 felt that the college offers enough opportunities to keep fit and healthy. Once again the high percentage could be down to the fact that the majority of males who completed the questionnaire are on a sport or public services course and would therefore have access to gym facilities and sporting opportunities on a regular basis.

Qualitative Data

Fig 3.5

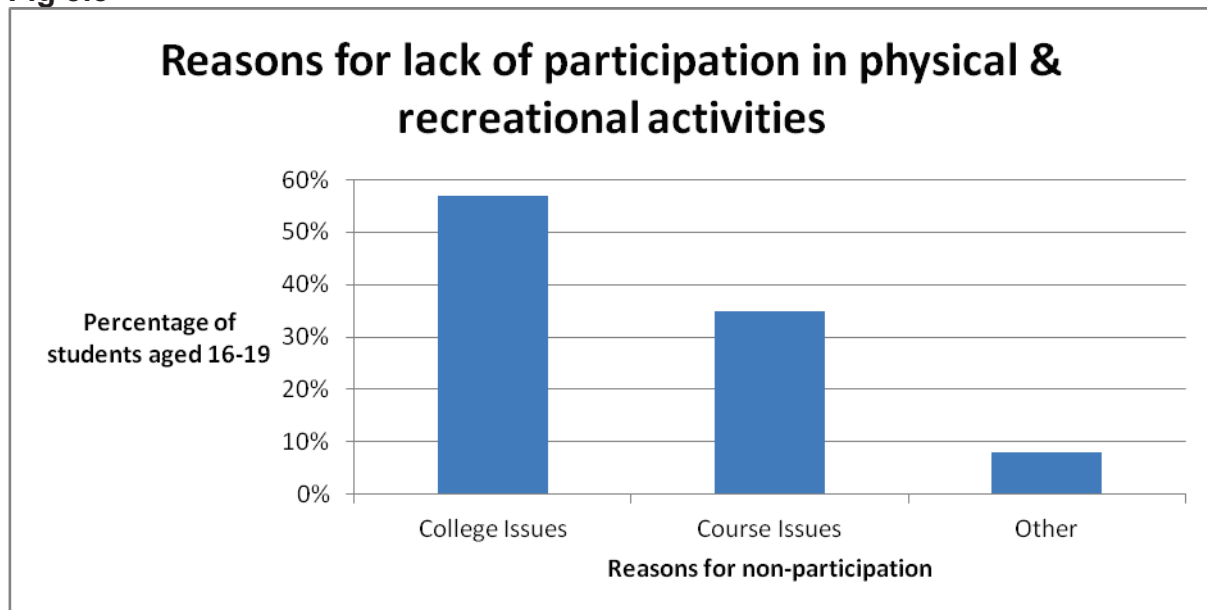


Fig 3.5 demonstrates that 57% of students felt that the college needs to do more to promote an active and healthy lifestyle.

Common responses included:

- There are not enough sports teams available at the college
- There is a lack of promotion and advertising of activities that are taking place across the college
- There is a lack of alternative exercise opportunities such as zumba, dance, aerobics, martial arts and yoga.
- There is not enough time in the college day to take part in physical activity or sport (the gym is only open 12-2pm for students).

The graph also shows that 35% of students felt there are course issues that are affecting their ability to take part in physical activity.

Common responses included:

- Tutors do not give any explanation of activities available to students.
- No activities are arranged for students as part of their course.

It is important to note that 8% of females stated that a key reason for non-participation in sport is due to them feeling uncomfortable exercising around males.

3. Key areas of focus

In light of the key findings from the pilot study, it is evident that there is an area for improvement that needs to be addressed within Cardiff and Vale College with regard to physical activity, health and lifestyle.

The following areas of focus will help to address the issues that have been identified.

- a) A Health and Lifestyle Coach will be appointed who will be responsible for creating and overseeing the programme. **(Appendix 2 Fig 5.1)**
- b) A Cardiff & Vale College Physical Activity, Health & Lifestyle Steering Group will be created that puts the health & wellbeing of students at the forefront of the College **(Appendix 2 Fig 5.2)**
- c) A healthy lifestyle festival 'Lets get physical' will run annually to engage and motivate students to take part in the programme. **(Appendix 4)**
- d) A 6 week tutorial programme which covers all aspects of physical activity and a healthy lifestyle, including a gym induction. This programme is also to include the OCN in Healthy Eating and Fitness. **(Appendix 3)**
- e) To develop partnerships with organisations such as the Welsh Assembly Government, Change 4 Life and Cardiff Health Alliance so that Cardiff and Vale College is at the forefront with regard to promoting physical activity and health.

4. Conclusion

The Physical Activity, Health & Lifestyle strategy will be responsible for the implementation of the key focus areas within the college framework. The steering group will have responsibility for monitoring, evaluating and implementing a framework to provide evidence of achieving long term goals. We will select baseline targets, goals and measures for the strategy which will give the college and outside agencies evidence of progression in the improvement and increase of physical activity and health within the college.

As a college we will be the leaders in the implementation of a strategic policy which demonstrates our commitment to improving the health and lifestyle of our students. We will continue to develop and research further into the activity levels of our students providing an on-site referral scheme. This will allow students to contact the health and lifestyle coach and build a rapport with that designated person. Guidance and support will then be offered to individuals with reference to improving their levels of physical activity.

As a college it is highly important we work closely with outside agencies such as, change4life, Sports Wales and the Welsh Assembly Government. There are strategies currently being used by these organisations to improve physical activity amongst the population of Wales. Therefore as a college we need to be more proactive and begin to implement their ideas along with our own initiatives to assist in the development and improvement of students' health.

5. Bibliography

Journals

(0) Welsh Assembly Government; Sport & Active Recreation in Wales; Climbing Higher Strategy, 2003

(1) Cardiff Physical Activity & Health Strategy 2008 – 2011 Page 17

Websites

(2) Abbie Whitewick, Western Mail, 2011, <http://www.walesonline.co.uk/news/health-news/2009/09/19/obesity-in-wales-91466-24716418/>) 18th November 2011

(3) Welsh Assembly Government, 2011
<http://wales.gov.uk/newsroom/healthandsocialcare/2011/110331obesity/?lang=en>)
18th November 2011

(4) Active Adults Survey, Sports Wales, 2008-2009
<http://www.sportwales.org.uk/research--policy/our-surveys/active-adults-survey.aspx>
21st November 2011

(5) NHS Choices, 2010
<http://www.nhs.uk/Conditions/Obesity/Pages/Introduction.aspx> 21st November 2011

(6) <http://oxforddictionaries.com/definition/sport> 21st November 2011

(7) World Health Organisation, 2011, http://www.who.int/topics/physical_activity/en
21st November 2011

(8) Laura Anderson, Richard Thurston, Social research Division, Welsh Government, 2010,
<http://wales.gov.uk/docs/caecd/research/110328cypmonitoren.pdf> Page 152, 21st November 2011

(9) Sustrans, 2006, <http://www.sustrans.org.uk/what-we-do/active-travel/active-travel-information-resources/physical-activity-and-health-facts-and-figures> 21st November 2011

(10) Department of Health, Chief Medical Officers, Professor Dame Sally Davies, CMO for England, Harry Burns, CMO for Scotland, Dr Michael McBride, CMO for Northern Ireland, Dr Tony Jewell, CMO for Wales, July 2011
http://www.dh.gov.uk/prod_consum_dh/groups/dh_digitalassets/documents/digitalasset/dh_128210.pdf 22nd November 2011

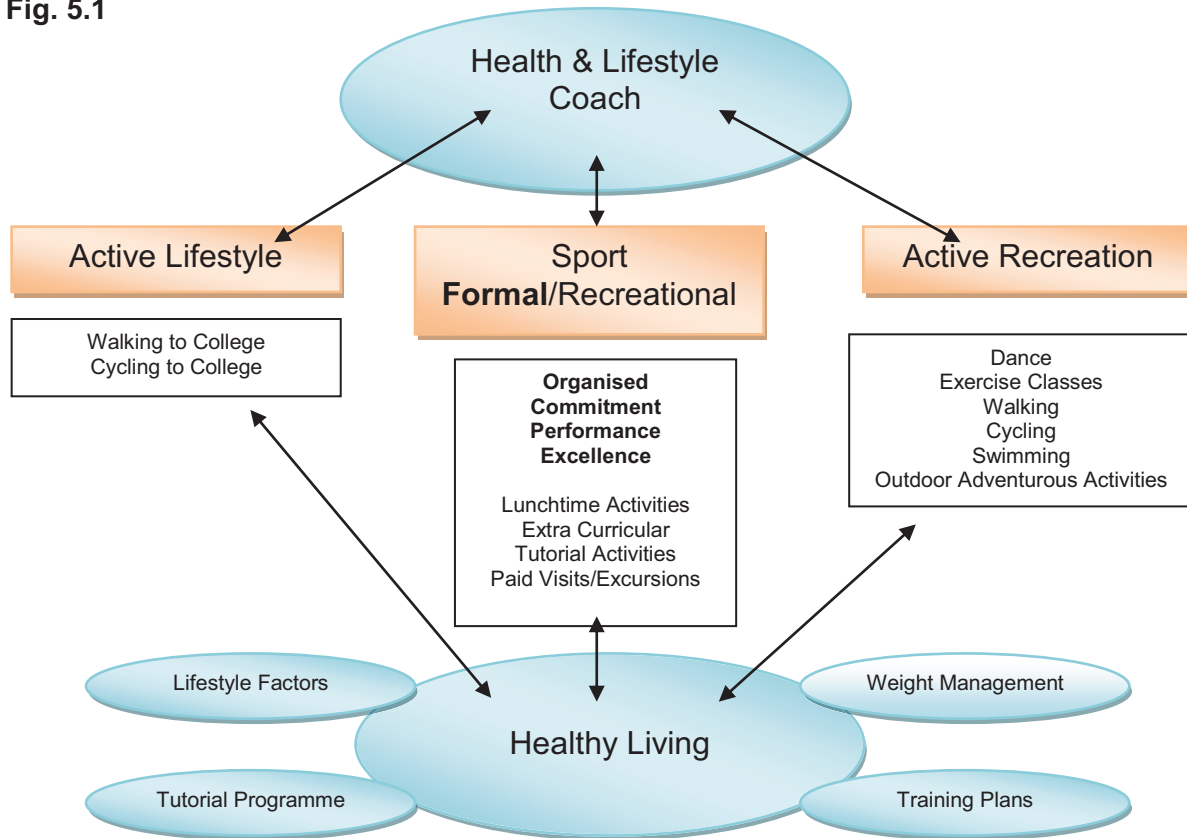
(11) HSC & WB Operational Plan 2011-2014
http://www.cardiffhealthalliance.org/attributes/HSCWB_11-14/OpPlan_11-14/07_HSCWB_2011-14_HealthyCities_FINAL.pdf 22nd November 2011

6. Appendices

1. Questionnaire
2. Health and Lifestyle Coach / Steering group diagrams
3. OCN in Healthy Eating and Fitness
4. Health and Lifestyle Festival Documents

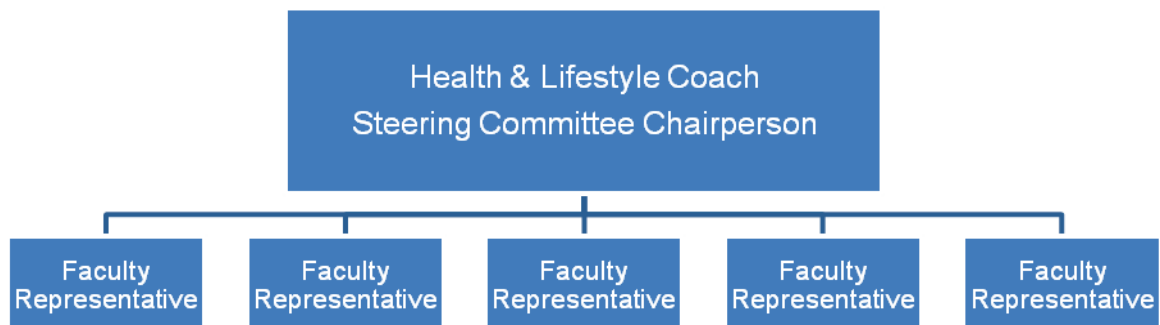
2.

Fig. 5.1



(Adapted from 'The Physical Activity Spectrum', Cardiff Physical Activity & Health Strategy, 2008-2011)

Fig 5.2



(Gives an outline of the steering committee structure)

3.

OCN in Healthy Eating and Fitness



Unit Code: **HJ12CY005**

Level: **Two**

Credit Value: **3**

Student:

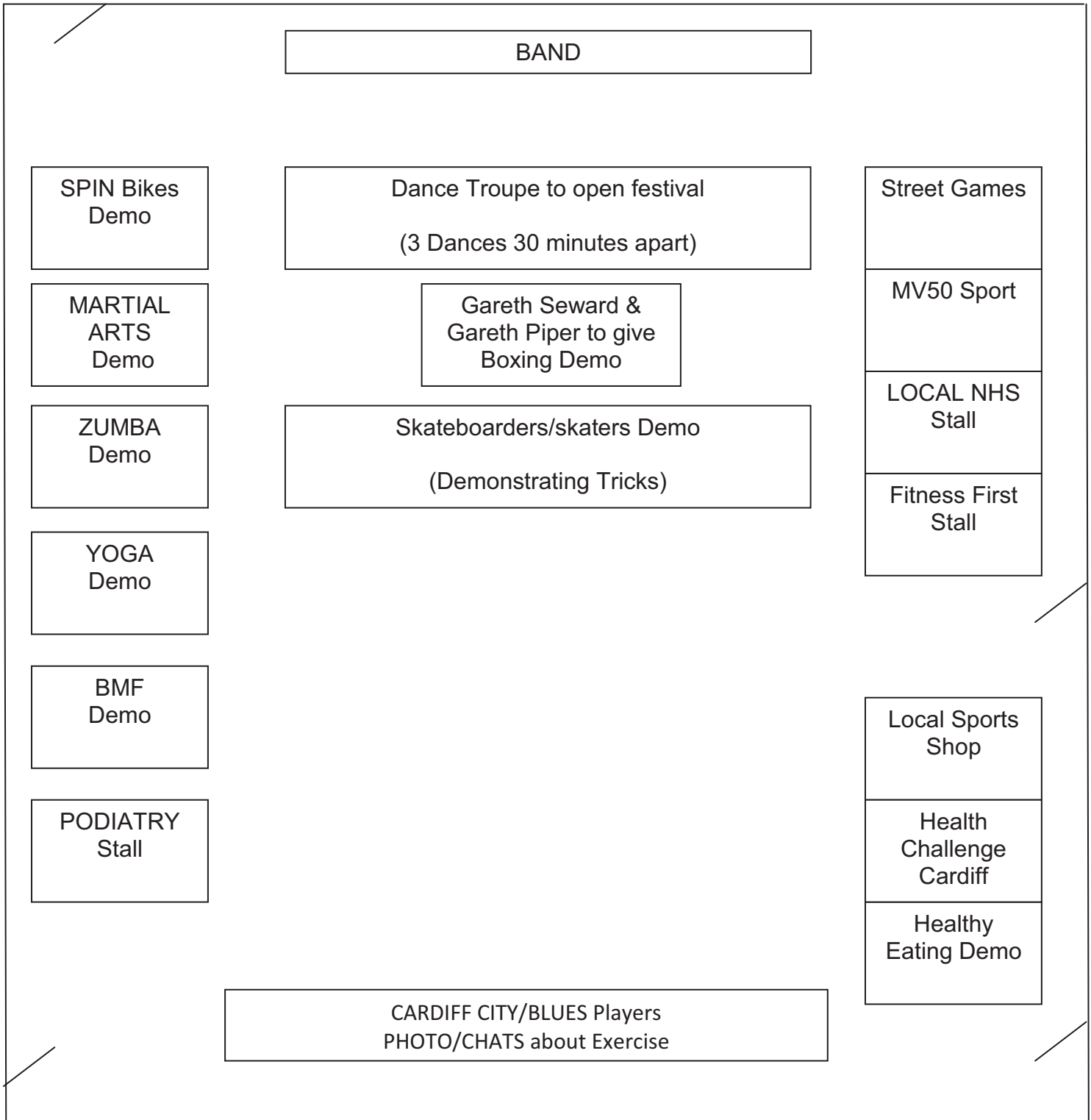
Lecturer:

Start Date

End Date

LEARNING OUTCOMES	ASSESSMENT CRITERIA
The learner will	The learner can:
1. Understand the importance of a healthy lifestyle.	1.1 Identify 3 main aspects of a healthy lifestyle. 1.2 Discuss why each aspect is important.
2. Understand how healthy eating can affect lifestyle.	2.1 Describe the effects of a healthy diet on lifestyle. 2.2 List and discuss the main food groups and describe how they help to maintain a healthy diet.
3. Understand how fitness and exercise can affect lifestyle.	3.1 List 5 positive effects of exercise on lifestyle and state why they are important.
4. Understand barriers to a healthy lifestyle.	4.1 List 5 reasons which could affect a healthy diet and explain why. 4.2 List 5 reasons which could affect exercise and explain why.
5. Understand own diet and fitness requirements.	5.1 List 5 areas where s/he could improve own diet and fitness and state how s/he can accomplish this.
6. Understand how basic health and safety when exercising.	6.1 List the health and safety requirements whilst undertaking exercise and state why they are important.
7. Understand the importance of personal hygiene whilst undertaking physical exercise.	7.1 Discuss the reasons why personal hygiene is important after exercise.

**4.
Health & Lifestyle Festival Floor Plan**



LET'S GET PHYSICAL!

Date - 12th March 2012

Venue - Sports Hall

Time - 9.00am - 2.30pm

There will be a whole host of micro sessions for you to get involved with, from martial arts, yoga, spin bikes & much more

Win £20 John Lewis vouchers by entering our 100m rowing challenge & 1km treadmill run

You can also win a bumper £50 in our beat the teacher bleep test challenge!!



Do You Have What It Takes?



Beat the Teacher Challenge!

To find out more & sign up join our Facebook page:

www.cavc.ac.uk/facebook

Help us to help you!



Create a Logo Competition

We are looking for a creative and dynamic logo for our new company 'Peak Physique', for a chance to win gift vouchers of your choice visit our facebook page for further details

www.cavc.ac.uk/facebook



Eitem 2.6

PET(4)-04-12 p6a

P-04-369 Deiseb yn erbyn y Llwybr Arfordirol o Gaerdydd i Gasnewydd a thu hwnt.

Geiriad y ddeiseb:

Rydym yn galw ar Gynulliad Cenedlaethol Cymru i annog Llywodraeth Cymru a Chyngor Cefn Gwlad Cymru, i derfynu'r Llwybr Arfordirol arfaethedig o gwmpas Cymru, yng Nghaerdydd.

Prif ddeisebydd: Roger Price

Ystyriwyd gan y Pwyllgor am y tro cyntaf: 28 Chwefror 2012

Nifer y deisebwyr: 14

Gwybodaeth ategol: Credwn y byddai gosod y llwybr rhwng Caerdydd a Chasnewydd a thu hwnt yn achosi aflonyddu gormodol a dinistriol ar y miloedd o adar gwyllt ar yr arfordir, sy'n hedfan i ffwrdd ar ddim (goddefgarwch o bobl, y Gylfinir: tua 400 llath, Pibydd y Mawn a'r Pibydd Coesgoch: tua 200 i 300 llath yn unig). Mae'r adar hyn yn dibynnu ar y llain tir cul a'r morfa heli hwn ger eu parth bwydo, i orffwys ac fel noddfa ddiogel.

Dynodwyd y lle fel Safle o Ddiddordeb Gwyddonol Arbennig at ddibenion cadwraeth, ac mae'n rhan o Gynllun Rhyngwladol Pwysig i Adar, Aber Afon Hafren. Bu'r safle hwn yn lloches am filoedd o flynyddoedd yn sicr, a chaiff ei fygwth yn aml.

Er bod nifer o ddewisiadau eraill ar gael i gerdded, nid oes dewis arall ar gael i'r cynefin arfordirol hwn.

Supporting letter

17 February 2012

To whom it may concern

It has come to my notice that a proposal has been made to install a coastal path between Cardiff and Newport, as a part of a coastal path around Wales. It is part of my present job to share birds and wildlife with the public, and professionally I am familiar with where, and where not, to take people so that wildlife is not disturbed.

From my many years living in Cardiff (through 1981, with regular visits back home up to the present) and studying the coastal birds between Cardiff and Newport, I am concerned that increased public access to this stretch of coast would be detrimental to the wading birds and waterfowl of the area. There is already existing informal public access, should people wish to visit, but present disturbance is, fortunately, minimal. Encouraging foot traffic could have disastrous consequences for the wading birds that use this area as a safe haven for roosting at high tide. Cardiff Bay has already been destroyed to make homes and recreation space for humans, and adding pressure to other sensitive coastal areas and their wildlife is simply adding insult to injury.

Sincerely

Steve N. G. Howell

Research Associate, PRBO Conservation Science

<<http://www.prbo.org>>

Senior Field Leader, WINGS Birdwatching Tours Worldwide

www.wingsbirds.com <<http://www.wingsbirds.com>>

Author, *A Guide to the Birds of Mexico and Northern Central America* (1995, Oxford University Press)

Where to Watch Birds in Mexico (1999, Cornell University Press)

Hummingbirds of North America (2002, Academic Press/Princeton University Press)

Peterson Reference Guides: Gulls of the Americas (2007, Houghton Mifflin Harcourt)

Peterson Reference Guides: Molt in North American Birds (2010, Houghton Mifflin Harcourt)

Petrels, Albatrosses, and Storm-petrels of North America (2012, Princeton University Press)

Eitem 3.1

P-04-333 Rhoi diwedd ar esgeuluso a gadael ceffylau a merlod drwy orfodi deddfwriaeth ar ddefnyddio microsglodion.

Geiriad y Ddeiseb:

Mae'r Gymdeithas er Lles Ceffylau a Merlod wedi cael llif o alwadau am gymorth gan aelodau pryderus o'r cyhoedd, perchnogion ceffylau a'r heddlu ynghylch ceffylau sydd wedi'u gadael, eu hesgeuluso neu sydd wedi'u hanafu. Mae nifer ohonynt wedi eu hanafu wrth iddynt grwydro ar ein ffyrdd sy'n beryglus iawn i fodurwyr.

Does dim microsglodyn gan yr un o'r ceffylau hyn – sydd wedi bod yn ofyniad cyfreithiol ar ebolion ac ebolesau sydd wedi'u geni ar ôl mis Gorffennaf 2009 – sy'n golygu nad yw hi'n bosibl olrhain perchnogion y ceffylau. Rydym yn galw ar Gynulliad Cenedlaethol Cymru i annog Llywodraeth Cymru i sicrhau bod microsglodion yn cael eu defnyddio a bod pasbortau gan geffylau fel sy'n ofynnol yn ôl Deddfwriaeth 2009.

Cynigwyd gan: Y Gymdeithas er Lles Ceffylau a Merlod

Ysytirwyd gan y Pwyllgor am y tro cyntaf: 11 Hydref 2011

Nifer y llofnodion: 2114

Y wybodaeth ddiweddaraf: Bydd y Pwyllgor yn ystyried y ddeiseb hon am y tro cyntaf.

E-mail from the petitioner 20-02-2012

Dear Rhodri,

Further to your email, we would like to update the Petitions Committee with the following report.

As an Equine Charity, when we first raised this petition back in the Autumn we were dreading the winter ahead because of the anticipated number of abandoned horses we envisaged along with that years foals. It was inevitable, not just through abandonment due to the current economic climate but due to the irresponsible over breeding by certain owners. The bottom had dropped out of the sales market and there were too many poor quality horses bred and unwanted.

Since before Christmas we have been inundated with calls for assistance with 'fly grazing' as the problem has now been called. Our Horse Hospital is, as a result, full. We have neither the space nor resources to take in any more equines. We have relied upon the good support of Bransby and Redwings to assist and they have taken in large groups.

The situation is not going to get any better unless drastic action is taken by implementing the microchipping laws which are already in place. More foals will no doubt be born in the months ahead adding to the ever growing numbers.

The concerns from the public who are worried not only for the welfare of these equines but for their own safety is understandable. When these horses get loose through inadequate fencing in search of food and wander on to the highways from unlit country lanes to A Roads it becomes even more serious. Not only is this putting human lives at risk but is it taking up the valuable time and resources of the Emergency Services and costing vast amounts from public funds.

The amount of damage caused is huge, one only has to look at the situation of the Woodland Trust alone. It is also costing the Equine Charities vast amounts not just for rounding up and transportation to their centres but veterinary treatment, feed and their care for life as the horses and ponies go into the various adoption schemes.

Something has to be done and soon. With the various bodies now working together the time is right for the existing laws to be implemented.

We would welcome the Petitions Committee to visit The Society for the Welfare of Horses and Ponies to see first hand our work and case histories and we would be extremely willing to present any evidence.

Chairman and Trustees
The Society for The Welfare of Horses and Ponies
Coxstone.
St. Maughans
Monmouth

Further e-mail received from the Petitioner 20-02-2012

Dear Rhodri,

Just to confirm that BBC1 Wales have made a programme dedicated to the problem of 'Fly Grazing' and Equine welfare.

. It includes an interview with Jenny MacGregor MBE and also a rescue of a five month old foal from Vale of Glamorgan. The programme is BBC Wales - Week In Week Out and will be transmitted at 10.30 p.m. tomorrow Tuesday 21st Feb.

Many thanks.

Sian

P-03-200 Camlas Morgannwg

Geiriad y ddeiseb

Rydym yn galw ar Gynulliad Cenedlaethol Cymru i gefnogi'r awydd i greu llwybr hanesyddol Camlas Morgannwg o Ferthyr i Fae Caerdydd, gan nodi lleoliadau o bwys ar y ffordd, ynghyd â safleoedd hanesyddol eraill o fewn cyrraedd i'r Gamlas, e.e. Llong Ysbyty Hamadryad, fel modd o annog diddordeb yn hanes y rhanbarth a thwristiaeth a darparu llwybr cerdded a beicio diddorol a heriol.

Cynigiwyd gan: John Williams

Nifer y llofnodion: 14

Ystyriwyd gyntaf gan y Pwyllgor ar: 19 Mai 2009

Sarita,

Thank you for sending this info onto me, I have a number of comments/observations:-

- At the time when the Petitions Committee arranged for me to have direct contact with the people within Cardiff CC who were responsible for the Cardiff Strategic Cycle Network, I made several attempts to engage but was advised that any changes I may want to make would be difficult as the plan was virtually agreed, this was of course extremely disappointing, I also asked for a meeting to view the detailed cycle plan and map and I never had a response to that request, so to be honest I gave up trying
- Having just reviewed, very quickly, the documents you have sent, there appears to me that there has been no attempt to mention the Glamorganshire Canal as an attraction in any way shape or form, for instance the Mellingriffith Water Pump that has been renovated in part by funds from Cardiff CC is not even mentioned as an attraction of note.
- So thank you for your continued support within the Petition Committee but the initiative, which at the time seemed to be a good opportunity to make the people of Cardiff and Visitors aware of the Canal and its significance to the area, appears to have failed.

I will also admit that I have had other more pressing things to deal with over the last 3 - 4 months, but hopefully I will be back on the Canal project very soon.

Regards and Thank You

John Williams

P-03-317 Cyllid ar gyfer y celfyddydau Hijinx

Geiriad y ddeiseb

Yn dilyn y toriadau anghymesur yn arian refeniw Theatr Hijinx, rydym yn galw ar Gynulliad Cenedlaethol Cymru i annog Llywodraeth Cymru i sicrhau bod digon o arian ar gael er mwyn gwneud yn siŵr nad yw gwaith arloesol a theilwng Theatr Hijinx mewn perygl. Mae'r cwmni unigryw hwn o Gymru wedi treulio 30 mlynedd yn datblygu cyfleoedd i bobl sydd ag anawsterau dysgu i gael eu cynnwys ar bob lefel a bydd y toriadau hyn yn golygu gostyngiad sylweddol yn y ddarpariaeth bresennol.

Cynigwyd gan: Mike Clark

Ystyriwyd am y tro cyntaf gan y Pwyllgor: Mis Mawrth 2011

Nifer y llofnodion: 1,893

Gwybodaeth ategol:

- Cwmni theatr proffesiynol a sefydlwyd ym 1981 yw Cwmni Theatr Hijinx. Mae'r cwmni'n mynd â chynrychiadau o safon uchel ar daith o amgylch lleoliadau bychain ledled Cymru a thu hwnt. Rhan fawr o gylich gwaith y cwmni yw gweithio gyda phobl sydd ag anableddau dysgu a grwpiau cymunedol cyffredinol.
- Lle bynnag fo'n bosibl, mae cwmni Hijinx yn gwneud ymdrech i gastio actorion sydd ag anableddau dysgu ochr yn ochr ag actorion sydd wedi'u hyfforddi'n broffesiynol, gan greu cast cynhwysol. Nid oes unrhyw hyfforddiant drama proffesiynol ar gael ar hyn o bryd yng Nghymru i oedolion talentog sydd ag anableddau dysgu, a byddwn felly'n mynd i'r afael â'r mater hwn ar frys, gyda chynlluniau ar y gweill i ddarparu hyfforddiant o'r fath.
- Sefydlwyd y prosiect **Theatr Odyssey** gan gwmni Hijinx ym 1999; ariannwyd y prosiect hyd at 31 Mawrth 2011 gan y Loteri Genedlaethol [**nid yw'n** rhan o'r grant refeniw]. Grŵp cyfranogi cymunedol yw Odyssey ar gyfer oedolion o bob gallu, sy'n cydweithio â sawl mudiad lleol, Ysgol Arbennig Meadowbank (sef ysgol ar gyfer plant sydd â phroblemau cyfathrebu difrifol) a myfyrwyr sy'n astudio cerddoriaeth yng Ngholeg Brenhinol Cerdd a Drama Cymru.
- **Yn 2009, enillodd Odyssey yr ail wobwr yng nghategori gwobrwyo'r Loteri Genedlaethol ar gyfer y prosiectau gorau yn y maes celfyddydau.**
- Mae tîm allgymorth Hijinx, sef **Hijinx Outreach**, yn cynnig gweithdai a phrosiectau i bobl sydd ag anableddau dysgu.

- Mae **Hijinx Outreach** yn gyfrifol am gynnal yr **Ŵyl Undod** – gŵyl sydd ar gyfer pobl o bob gallu, sy'n para am wythnos ac sy'n cynnwys perfformiadau, gweithdai a gweithgareddau eraill a gaiff eu darparu gan gwmnïoedd o bob ban o'r byd, a hynny ar y cyd â Chanolfan Mileniwm Cymru a Mencap Cymru. (Yn hanesyddol, mae'r ŵyl yn cael ei hariannu drwy ymdrechion ychwanegol i godi arian a thrwy grantiau ar gyfer cyflogau staff craidd a chostau swyddfa cyffredinol.)
- Grant refeniw Hijinx ar gyfer 2010/11 yw £234,448, yn ogystal â £29,990 o arian loteri ar gyfer y prosiect Theatr Odyssey. Mae'r ffigur hwn yn golygu bod y lefelau ariannu wedi bod yn ddigyfnewid dros y pum mlynedd diwethaf.
- O 1 Ebrill 2011, £160,000 yw cyfanswm y grant, a hynny gan **gynnwys** yr arian ar gyfer Odyssey. Mae hyn yn golygu toriad o £74,448 + £29,990, sef £104,438.
- Mae pob ffurflen monitro ansawdd a gyhoeddwyd gan Gyngor Celfyddydau Cymru dros y tair blynedd diwethaf wedi nodi bod gwaith y cwmni'n "dda" neu'n "rhagorol".
- Mae penderfyniad y Cyngor yn gwbl groes i flaenoriaethau Llywodraeth Cymru ac i ddyheadau ei hadolygiad buddsoddi.
- O dan y grant newydd, ni fydd Hijinx yn gallu datblygu gwaith gyda phobl sydd ag anableddau dysgu, a bydd y sefyllfa hon yn arwain at gwtogiad sylweddol yn y gweithgareddau sydd ar gael ar hyn o bryd.
- Bydd aelodau o staff **yn** colli eu swyddi a bydd y cwmni'n cael ei ailstrwythuro. Yn sgil hynny, bydd cymuned ymylol yn dioddef.
- Mae Hijinx yn gwmni unigryw ac arloesol. Dyma'r unig gwmni yng Nghymru sy'n cynnig cyfleoedd proffesiynol i oedolion sydd ag anableddau dysgu i berfformio ac i fod yn gynorthwyyr gyda gweithdai. Mae Hijinx wedi ymrwymo i weithio mewn ffordd sy'n cynnwys pawb, a chred y cwmni fod gan bawb rhywbeth i'w gynnig, waeth beth yw lefel eu gallu.



WALES AUDIT OFFICE
SWYDDFA ARCHWILLO CYMRU

Wales Audit Office / Swyddfa Archwillo Gymru

24 Cathedral Road / Heol y Gadeiriain
Cardiff / Caerdydd

CF11 9LJ

Tel / Ffôn: 029 20 320500

Fax / Ffacs: 029 20 320600

Email / E-bost: wales@wao.gov.uk

www.wao.gov.uk

Date: 9 December 2011
Your ref: P-03-308 / 311 / 314 / 317
Our ref: HVT/1501/fgb
Page: 1 of 2

Mr William Powell AM
Chair, Petitions Committee
National Assembly for Wales
Cardiff Bay
Cardiff CF99 1NA

Dear Mr Powell

ARTS COUNCIL OF WALES INVESTMENT REVIEW

Thank you for your letter of 9 November asking me to include an examination of the Arts Council's Investment Review in my forward work programme.

I need to be clear that it is not within my remit to comment or pass judgement on the relative merits of decisions made by the Arts Council.

In response to correspondence received earlier this year about the Review and the Council's openness and accountability in reaching its final conclusions, my staff undertook some work to determine whether a more in-depth investigation was warranted.

I was already aware from my audit of its financial statements that the Council commissioned RSM Tenon to undertake a series of internal audit reviews to provide assurance in respect of the Investment Review process. Four reviews were completed at different stages and the internal auditors concluded favourably on each stage of the process reporting that *'the Council can take substantial assurance that the controls upon which the organisation relies to manage this area, as currently laid down and operated, are effective'*.

My staff also reviewed the Council's arrangements for dealing with appeals against its decisions. I was satisfied that, on the strength of these enquiries and the evidence of the Council's internal auditors, no further investigation was warranted. I remain of that view but if your Committee or its individual petitioners have any direct evidence that might lead me to reconsider this decision I would be happy to review it.

Direct Line: 029 2032 0510

E-mail: huw.vaughan.thomas@wao.gov.uk

Tudalen 37



Date: 9 December 2011
Our ref: HVT/1505/fgb
Page: 2 of 2

I have noted in particular your reference to discussions about the overarching direction of the arts agenda and its delivery of a value for money strategic approach. I see that the Government has committed to a review of the support for arts in schools including theatre experiences for young people. A value for money study ahead of the outcome of that review would, I think, be premature. However, I review my plans for value for money examinations annually to ensure its continuing relevance. I will bear your Committee's work in mind when I next consider the options for my forward work programme.

Yours sincerely



HUW VAUGHAN THOMAS
AUDITOR GENERAL FOR WALES

Huw Lewis AC / AM
Y Gweinidog Tai, Adfywio a Threftadaeth
Minister for Housing, Regeneration and Heritage



Llywodraeth Cymru
Welsh Government

Your ref: P-03-317
Our ref: HL/06080/11

William Powell AM
Chair
Petitions Committee
Tŷ Hywel
Cardiff Bay
Cardiff
CF99 1NA

21 December 2011

Dean William

Thank you for your letter of 29 November regarding the evidence given to the Petitions Committee by the *Hijinx Funding for the Arts* petitioners on 1 November 2011.

You state the committee agreed to write to me to enquire how the priorities set out in future Remit Letters to the Arts Council of Wales (ACW) will be decided and whether Members of the Petitions Committee could have an input into that letter.

I am taking this opportunity to also respond to your letter of 29 November 2011 sent to Jane Hutt AM, Minister for Finance and Leader of the House, seeking her views on the equality issues raised by the *Hijinx Funding for the Arts* petitioners.

As you are aware, Welsh Government funding of the arts in Wales is channelled through ACW, which operates at arms-length from Government. As Minister for Housing, Regeneration and Heritage, it would not be appropriate for me to intervene in individual funding decisions taken by ACW, or to comment in detail on ACW's decision to reduce Hijinx Theatre's funding.

The Minister with responsibility for the arts issues ACW with an annual Remit Letter as part of our sponsorship arrangements. The Remit Letter sets out, at a strategic level, the priorities and targets upon which ACW should focus in the year ahead.

The Welsh Government, through ACW, aims to develop a vibrant, sustainable and high-quality arts sector accessible to all individuals and communities in Wales. The Welsh Government's Programme for Government document emphasises commitments that require ACW to continue improving access and reducing the barriers to participation and

appreciation of the arts, and to undertake a developmental and support role for arts organisations in Wales.

The priorities set out in future Remit Letters to ACW will be linked to the Welsh Government's strategic agenda for the arts in Wales as set out in the Programme for Government. The strategic priorities and targets will be set by me, as Minister for Housing, Regeneration and Heritage in consultation with ACW. There will therefore be particular emphasis on improving accessibility for Children and Young People and those groups that have traditionally found it difficult to break down the barriers preventing participation, for example disabled people, BME communities, and people living in rural areas.

Although some National Assembly for Wales (NAfW) Committees scrutinise existing Welsh Government policies, it would not be appropriate for the NAfW Petitions or Communities, Equality and Local Government Committees comprised of cross-party AMs to have direct input into a WGSB Remit Letter issued by the Welsh Government.

Regarding the equality issues raised by the *Hijinx Funding for the Arts* petitioners, ACW is committed to promoting equality of access to arts events and to promoting equality of opportunity within the arts. ACW's Disability Equality Scheme ensures that it complies with its duties towards disabled people under the Equality Act 2010. Furthermore, in my Remit Letter I encourage ACW to assess the implications of its financial decisions on equality issues.

Last year the Communities and Culture Committee published its report into 'the Accessibility of Arts and Cultural Activities in Wales'. One of the key recommendations was to emphasize the need to improve access to the arts for disabled people. This recommendation was accepted by the Welsh Government at the time and I can confirm that this remains a priority for the current administration. I have recently written to the Chair of the Communities, Equality and Local Government Committee, updating her on the progress made against this and the other recommendations contained within the report.

As regards the specific issue of Hijinx Theatre's funding, I can only reiterate what I have said before. Hijinx remains a revenue funded client of ACW. ACW is focusing funding on Hijinx Theatre's work with people with learning difficulties, which is a high priority element of the company's activity.

I would urge Hijinx to continue to work closely with ACW with a view to maximising the opportunities for securing Lottery project funding, to supplement its annual revenue funding.

Regards



Huw Lewis AC / AM

Y Gweinidog Tai, Adfywio a Threftadaeth
Minister for Housing, Regeneration and Heritage

Pwyllgor Cymunedau, Cydraddoldeb a
Llywodraeth Leol

Communities, Equality and Local Government
Committee

William Powell, AM
Chair, Petitions Committee
National Assembly for Wales
Cardiff Bay
CF99 1NA

Bae Caerdydd / Cardiff Bay
Caerdydd / Cardiff
CF99 1NA

16 February 2012

Dear William

Petition: Anti-hate-crime campaign in Wales
Petition: A call to review the issues set out in the 2007 report on football in Wales
Petitions: Save Gwent Theatre; Spectacle Theatre; Save Theatr Powys & Mid Powys Youth Theatre
P-04-317 Hijinx Funding for the Arts

Thank you for your letter of 12 January, in which you notified me of your Committee's consideration of a number of petitions.

Petition: Anti-hate-crime campaign in Wales

You will be aware that the Committee has recently conducted an inquiry on disability-related harassment. The Committee's report was published at the end of 2011 and we have given a commitment in that report to keep the issue under review during this Assembly.

Petition: A call to review the issues set out in the 2007 report on football in Wales

Croesewir gohebiaeth yn y Gymraeg a'r Saesneg / We welcome correspondence in both English and Welsh
Pwyllgor Cymunedau, Cydraddoldeb a Llywodraeth Leol / Communities, Equality and Local Government Committee
Gwasanaeth y Pwyllgorau / Committee Service
Ffôn / Tel : 029 2089 8429
Eboest / Email : Communities.Equality&LocalGov@wales.gov.uk

The Committee has recently agreed to undertake an inquiry into football in Wales. It is intended that the inquiry will take place next term. While the purpose of the inquiry is not to directly follow up on the issues raised in the 2007 Assembly report, I am sure that the Committee will address any relevant issues raised with us by consultees.

**Petitions: Save Gwent Theatre; Spectacle Theatre; Save Theatr Powys & Mid Powys Youth Theatre
P-04-317 Hijinx Funding for the Arts**

The Committee has agreed to establish a Task and Finish Group to consider the issue of participation in the arts. While the terms of reference for the Group's inquiry does not directly relate to the petitions above, we hope that the organisations named above will be able to participate in our inquiry and raise any concerns they may have in relation to the effects of funding cuts on participation in the arts in Wales.

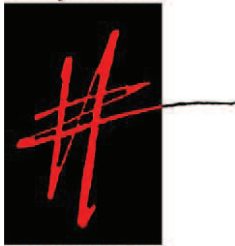
I have asked the Clerk of the Communities, Equality and Local Government Committee to ensure that the lead petitioners are included in the relevant consultation process for the inquiries mentioned above.

Yours sincerely

A handwritten signature in black ink that reads "Ann Jones". The signature is written in a cursive, flowing style.

Ann Jones AC / AM
Cadeirydd / Chair

HIJINX



THEATRE

Hijinx Theatre
Wales Millennium Centre
Bute Place
Cardiff Bay
CF10 5AL

William Powell AM
Chair
Petitions Committee
Ty Hywel
Cardiff Bay
Cardiff Cf99 1NA

24th February 2012

Dear Mr Powell

PETITIONS COMMITTEE 28TH FEBRUARY HIJINX THEATRE

Thank you for providing Hijinx with the opportunity to comment on the letters you have received from Huw Lewis, Minister for Housing, Regeneration, and Heritage dated 21st December and from the Auditor General for Wales dated 9th December, following discussions with and consideration of our Petition by your Committee on 1st November.

We have no comments to make in respect of the Auditor General's letter, understanding that he can comment on process only.

In respect of the Minister's letter, we fully appreciate and understand his position regarding the Arts Council for Wales. We are encouraged by, and fully support the Welsh Government's strategic priorities and targets for the arts in Wales. We are pleased that priorities are focussed on improving accessibility for children and young people, breaking down barriers preventing participation with particular emphasis on people with disabilities, ethnic minorities and people living in rural areas.

Hijinx share this ethos and have always believed that arts activity should be available to everyone regardless of their ability or geographical location, and not be focussed on the few. For over 30 years, we have been delivering high quality arts activity for adults with learning disabilities and their community, as well as for the general public in small community centres both rural and urban. When we have crossed the border into England and Scotland we have seen ourselves as ambassadors for Wales, showing that as a nation Wales care about equality and inclusion.

ACW's Investment Review decision to reduce our revenue grant and move our inclusive Odyssey group from lottery project funding into core activity without any uplift, resulted in a 40% reduction in revenue funding. This has resulted in compulsory staff redundancies and reduced output for the very groups that both Hijinx and the Welsh Government see as a priority.

Our Petition was one avenue open to us to draw attention to the situation Hijinx found themselves in following the Investment Review. It is worth reminding Members that no other retained organisation was treated so severely as Hijinx and indeed the vast majority of retained organisations actually saw an increase in their revenue funding. In our previous submissions to this Committee we have provided further detailed information on the impact of this situation both to ourselves and far more importantly to the audiences and people we serve.

I still feel that the wording of the petition is relevant and to my knowledge hasn't been addressed. To remind you of that wording :

*“Following the disproportionate cut in the revenue funding of Hijinx Theatre we call upon the National Assembly of Wales to urge the Welsh Government to ensure sufficient funding is available so that the exemplary and ground breaking work undertaken by Hijinx is not threatened. This unique Welsh company has spent 30 years developing opportunities for people with learning difficulties to **be included at all levels** and this cut will result in a serious reduction in their current provision.”*

We are grateful for the confidence the Arts Council have placed in Hijinx by retaining us in their portfolio of RFOs, and awarding substantial project grants for the 2011 and 2012 Unity Festivals. We have also received a project grant to contribute towards the costs of bringing world famous companies in to Wales to run short inclusive residencies for students in our training academy for actors with leaning disabilities – this work is ground breaking and unique in Wales. We do value ACW's support and have continued to have a professional relationship with them during this turbulent year.

We must however be realistic in that project grants are not a substitute for the massive reduction in revenue grant and the ability of the core company to support the exciting projects we are now undertaking. Each project grant does have a degree of free-lance support built into it, but the experience and history has been lost – people are constantly trying to re-invent the wheel. Lottery project grants also require Hijinx to attract at least 25% of matched funding, which, in the current economic climate is a real challenge, especially when we are seeking additional funding to support our core activity.

We still mourn the loss of our community tour that for so many years provided small communities all over Wales with the opportunity to enjoy wonderful live theatre on their doorsteps at a reasonable price. Hopefully, at some point in the future we will be able to resume this provision and feel reassured that targeting artistic provision to rural communities is also a priority for the Welsh Government. We are also painfully aware that at no point in any review, or audit of the review, have audiences been consulted about their views. We have many, many quotes from audience members “... please, please don't stop coming to rural communities, it is a life-line” ... is just one of them.

Our dream was that at some point in the future, all lines would be blurred between productions, and talented, trained actors with learning disabilities would be able to tour in mainstream productions for the general public in disability blind parts. This is what real inclusion means to us and is now further away than ever before.

Please be assured that we have always enjoyed a good working relationship with the Arts Council and will continue to do so, although I still feel they don't quite grasp the true nature of inclusion, but feel the need to tick a box to do with providing a service for people with a learning disability.

Finally can I thank the Members of the Petitions Committee (both present and past) and the support staff who I have always found to be helpful, courteous and efficient in dealing with our petition, and keep us informed of progress.

Yours sincerely

Mike Clark
Chair of Trustees
Hijinx Theatre

Eitem 3.4

P-04-357 Dyrannu Tai Cymdeithasol yng Nghymru

Geiriad y ddeiseb:

Rydym yn galw ar Gynulliad Cenedlaethol Cymru i annog Llywodraeth Cymru i fynd i'r afael â'r system ddiffygiol a ddefnyddir i ddyrannu tai cymdeithasol yng Nghymru.

Ar hyn o bryd, gall unigolyn nad yw erioed wedi ymweld â Chymru fod yn gymwys i gael tŷ cymdeithasol, a hynny o flaen rhywun a aned ac a fagwyd yng Nghymru. Mae'r sefyllfa hon yn deillio o system bwyntiau sy'n rhoi blaenoriaeth i geisiadau gan bobl ddigartref, pobl sy'n byw mewn tai yr ystyrir eu bod yn anaddas a phobl a gafodd eu rhyddhau'n ddiweddar o sefydliadau arbennig, ac ati.

Ar yr olwg gyntaf, mae'r strategaeth hon yn ymddangos yn strategaeth glodwiw; serch hynny, pan gaiff ei chymhwyso ar lefel y Deyrnas Unedig, gwelwn lif diddiwedd o bobl sydd â 'phroblemau' ac sy'n hanu o'r tu allan i Gymru yn amddifadu pobl Cymru o'r cyfle i gael tai cymdeithasol. Yn rhy aml, bydd y datblygiadau hyn yn difetha cymunedau.

Er mwyn datrys y broblem hon, rydym yn galw ar Lywodraeth Cymru i gyflwyno system lle byddai'n rhaid i unigolyn fyw yng Nghymru am gyfnod o bum mlynedd cyn y byddai'n gymwys i gael tŷ cymdeithasol. Yr unig eithriadau fyddai ffoaduriaid gwleidyddol a phobl eraill sy'n ceisio dianc o sefyllfaoedd lle maent yn cael eu herlid.

Prif ddeisebydd: Royston Jones

Ystyriwyd gan y Pwyllgor am y tro cyntaf: 10 Ionawr 2012

Nifer y deisebwyr: 115

Huw Lewis AC / AM
Y Gweinidog Tai, Adfywio a Threftadaeth
Minister for Housing, Regeneration and Heritage



Llywodraeth Cymru
Welsh Government

Eich cyf/Your ref P-04-357
Ein cyf/Our ref HL/05102/12
William Powell AM
Chair Petition's Committee
Ty Hywel
Cardiff Bay
Cardiff
CF99 1NA

31 January 2012

Dear William

Thank you for your letter of 13 January about the 115 signature petition requesting a five year residency qualification with limited exceptions before people can qualify for social housing in Wales.

I recognise the Petition Committee's concern about this matter. As stated in my previous letter, local authorities are statutorily responsible for meeting the housing needs of the local population. Therefore, it is local authorities rather than the Welsh Government which are better placed to address local housing need.

The Welsh Government report entitled '*The effects of recent migration on local authorities' allocation of housing and actions under homelessness legislation*' (2009) revealed that the net pressures created by migration on access to social housing were not as great as public perceptions would suggest.

I appreciate the concerns felt by many people about the difficulties in accessing social housing. However, I note the Committee's concerns about the effect of a five year residency qualification on vulnerable people and others such as key workers. I also have concerns that such a proposal could contravene legislation intended to combat discrimination as well as causing complications for people crossing the border to take up employment opportunities. It is for this reason that the Welsh Government has no plans to introduce a provision along the lines of that suggested in the petition.

Regards

Huw Lewis AC / AM
Y Gweinidog Tai, Adfywio a Threftadaeth
Minister for Housing, Regeneration and Heritage

Bae Caerdydd • Cardiff Bay
Caerdydd • Cardiff
CF99 1NA

English Enquiry Line 0845 010 3300
Llinell Ymholiadau Cymraeg 0845 010 4400
Correspondence: huw.lewis@wales.gsi.gov.uk

Wedi'i argraffu ar bapur wedi'i ailgylchu (100%)

Printed on 100% recycled paper

February 9th 2012

Rhodri Wyn Jones,
Petitions Committee,
National Assembly for Wales.

Dear Mr. Jones,

After receiving your e-mail today, and reading the attached letter from Huw Lewis, Minister for Housing, Regeneration and Heritage, to William Powell AM, your Chairman, I have the following observations and comments to make.

The second paragraph of Mr Lewis' letter mentions local authorities but not housing associations. Seeing as the latter are now responsible for a larger total housing stock than the former did the Minister really mean to mention only local authorities?

My suggested five-year residency qualification could of course allow for genuine key workers and others, that is not really the issue. Nor is it lack of social housing.

The problem, as everyone who has looked at social housing in Wales can see, is that too many social housing providers are bringing into Wales criminals, indigents and others who have overstayed their welcome where they lived before. Many of the 'homeless' being housed in Wales now are people who are homeless because they have been evicted from social housing and other accommodation in England. These are, effectively, being dumped in Wales.

The issue is therefore not about the "vulnerable" or key workers, or genuinely and non-criminal homeless, it is about protecting Welsh communities from those currently being forced on them by irresponsible social housing providers who are almost certainly being paid extra for taking in these high-risk tenants.

It boils down to this: Why does a homeless criminal in England, with no Welsh connections, automatically qualify for social housing in Wales? Mr Lewis may choose to pretend it's about other issues, but those living in communities blighted by the irresponsible behaviour of social housing providers know the truth. And it won't go away.



Royston Jones

Eitem 3.5

P-04-347 Adolygu eiddo ac asedau

Geiriad y ddeiseb:

Rydym yn galw ar y Cynulliad Cenedlaethol a Llywodraeth Cymru i gynnal Adolygiad Asedau ac Eiddo ar eu hadeiladau a / neu eu heiddo unigol i leihau nifer yr eiddo nad yw'n cael ei ddefnyddio'n ddigonol ac i ddefnyddio'r cyfalaf a gaiff ei arbed i ariannu Rhaglen Ysgolion yr 21ain Ganrif.

Prif ddeisebydd: Cynghorydd Arfon Jones

Y dyddiad yr ystyriodd y Pwyllgor y ddeiseb am y tro cyntaf: 29 Tachwedd 2011

Nifer y deisebwyr: 19

Leighton Andrews AC / AM
Y Gweinidog Addysg a Sgiliau
Minister for Education and Skills



Llywodraeth Cymru
Welsh Government

Eich cyf/Your ref P-04-347
Ein cyf/Our ref LA/06622/11

William Powell AM
Chair of the Petitions committee
Ty Hywel
Cardiff Bay
Cardiff
CF99 1NA

15 December 2011

Dear William,

Thank you for your letter dated 28 November, regarding petition P-04-347 - Property and Asset Review. The petition requests that the National Assembly and the Welsh Government carry out an asset and property review of their respective buildings and or priorities to reduce the number of properties that are underutilised and to use the capital saved to fund the 21st Century Schools Programme.

In July 2011 the Cabinet agreed a set of principles for Phase 2 Location Strategy (2010-15) in respect of the Welsh Government's administrative estate.

The principles provide a framework for sustainable management of the Welsh Government administrative estate, maximising our investment in our major new offices. We will also sustain Welsh Government jobs and offices in key locations in support of local economies, reduce our greenhouse gas emissions and deliver a 30% reduction against current occupancy costs.

The over-riding aim is to provide a high quality, compliant and sustainable property infrastructure in the right place to support Welsh Government's business, at a cost the organisation can afford.

Effective management of our property assets is increasingly important during this period of unprecedented economic stringency. The pressure on finances means that we must better align our office estate to the business and push hard for efficiency savings - investing where appropriate, rationalising where necessary and optimising savings through better estate rationalisation.

Bae Caerdydd • Cardiff Bay
Caerdydd • Cardiff
CF99 1NA

English Enquiry Line 0845 010 3300
Llinell Ymholiadau Cymraeg 0845 010 4400
Correspondence.Leighton.Andrews@wales.gsi.gov.uk

Wedi'i argraffu ar bapur wedi'i ailgylchu (100%)

Printed on 100% recycled paper

Full details on the Welsh Government's Administrative estate and how it is being managed can be found in the annual 'State of the Estate' report. A link to the most recent report is attached.

<http://wales.gov.uk/about/civilservice/facts/ourbuildings/stateestate1011/?cr=3&lang=en>

In respect of the 21st Century Schools programme, it would not be possible for any savings made on property to support the programme, as these are separate distinct budgets within the Welsh Government, any decisions on the utilisation of budget savings would need to be made by all Ministers collectively.

On the 5th December 2011, I issued a written statement regarding the 21st Century Schools programme, which is attached. The statement can also be found at the link below;

<http://wales.gov.uk/about/cabinet/cabinetstatements/2011/05december21centuryschoolsprog/?lang=en>

Yours sincerely



Leighton Andrews AC / AM
Y Gweinidog Addysg a Sgiliau
Minister for Education and Skills



Peter Black AC/AM

**Comisiynydd y Cynulliad
Assembly Commissioner**

William Powell AM
National Assembly for Wales
Cardiff Bay
CF99 1NA

9 December 2011

Dear William

Thank you very much for your letter dated 1 December 2011 regarding the petition received about Welsh Government and Assembly offices.

The lease for the National Assembly for Wales office in Prince's Drive, Colwyn Bay expires on 30 September 2013. We are taking this opportunity to review our requirements in North Wales, looking at the range of options available (which include the possibility of sharing accommodation) and the costs and benefits of each of these options,. Our future requirements for office accommodation will be agreed following completion of this review during 2012.

The Assembly has no other property apart from the estate in Cardiff Bay and the Colwyn Bay office. As you know, the Welsh Government already shares the Assembly's office accommodation and facilities in Cardiff Bay.

Bae Caerdydd
Caerdydd
CF99 1NA

Cardiff Bay
Cardiff
CF99 1NA

Ffôn • Tel: 029 2089 8598
Ffacs • Fax: 029 2089 8117

Ebost • Email: Carys.Evans@wales.gov.uk

Ysgrifenyddiaeth Comisiwn y Cynulliad/Assembly Commission Secretariat

Tudalen 52

Please let me know if I can be of any further assistance.

Yours sincerely

Peter Black
Comisiynydd y Cynulliad
Assembly Commissioner

Gohebiaeth gan y Deisebydd / Correspondence from the Petitioner: 09-02-2012

Annwyl Bawb,

Diolch am y copi o'r ohebiaeth gan Peter Black a Leighton Andrews. Rwyf yn ddigon bodlon â'r ymatebion sy'n nodi bod y Comisiwn a'r Llywodraeth yn barod i weithredu i leihau costau adeiladau di-angen.

Felly, rwy'n ddigon hapus i'r ddeiseb gael ei chau.

Y Cynghorydd Arfon Jones.

Dear All,

Thanks for a copy of correspondence from Peter Black and Leighton Andrews, and I'm quite happy with the responses that the Commission and the Government are prepared to take action to reduce costs of unnecessary buildings.

Therefore, I am happy for the petition to be closed.

Councillor Arfon Jones.

P-04-329 Rheoli sŵn o dyrbinau gwynt sy'n peri diflastod

Geiriad y ddeiseb

Rydym yn galw ar Gynulliad Cenedlaethol Cymru i annog Llywodraeth Cymru i basio deddf er mwyn rheoli sŵn o dyrbinau gwynt sy'n peri diflastod yn ystod oriau anghymdeithasol. Gofynnwn am gychwyn cyfnodau o seibiant pan fydd tyrbinau gwynt yn cael eu diffodd.

Mae cyfnodau o seibiant rhag sŵn yn gyffredin mewn deddfwriaeth iechyd y cyhoedd. Mae Sefydliad Iechyd y Byd yn galw amdanynt yn ei adroddiad ar sŵn cymunedol; ac ar hyn o bryd yn y Deyrnas Unedig maent yn weithredol mewn meysydd awyr, safleoedd adeiladu, ffatrioedd a safleoedd eraill sydd â sŵn sy'n peri diflastod gyda'r hwyr a thros nos.

Rydym yn galw ar hyn i fod yn berthnasol i dyrbinau sydd dros 1.3MW, a bod cyfnodau o seibiant rhwng 18.00 a 06.00 ar gyfer tyrbinau sydd o fewn 1.5Km i breswylfeydd unigol; a rhwng 22.00 a 06.00 ar gyfer tyrbinau sydd o fewn 2Km i gymunedau. Dylai awdurdodau yng Nghymru sy'n trafod ceisiadau am dyrbinau sy'n cynhyrchu llai na 50MW o drydan, a'r Comisiwn Cynllunio Seilwaith sy'n trafod ceisiadau ar gyfer tyrbinau sy'n cynhyrchu dros 50MW o drydan, hysbysu datblygwyr o'r cyfyngiad iechyd y cyhoedd hwn a all effeithio ar dyrbinau unigol.

Cyflwynwyd y ddeiseb gan: James Shepherd Foster

Ysytiriwyd y ddeiseb gan y Pwyllgor am y tro cyntaf: 27 September 2011

Nifer y llofnodion: 1074

Gwybodaeth ategol: Yn ogystal â iechyd y cyhoedd, byddai'r mesur yn amddiffyn anifeiliaid y nos fel ystlumod, tylluanod ayb. Mae Jonathan Edwards AC wedi galw am fesur o'r fath, ac mae Rhodri Glyn Thomas AC wedi galw am fesur tebyg i hwn. Ni fyddai hyn yn effeithio ar Nodyn Cyngor Technegol 8 (TAN 8) ac ni fyddai TAN 8 yn effeithio ar y mesur hwn, oherwydd nid yw TAN 8 yn delio gyda goblygiadau tyrbinau ar iechyd. Hefyd, dim ond gallu tyrbinau i gynhyrchu trydan fel gwerth sy'n angenrheidiol, ac nid pa mor effeithiol yw'r tyrbinau ar gynhyrchu trydan. Mae gan Gymru hen hanes o esgeuluso materion lechyd a Diogelwch, ac mae hyn wedi arwain at gyfyngu ar fywydau pobl mewn cyfran helaeth o'r gymuned. Yn ystod eu datblygiad, ni ddylid chwarae â chlyw plant ifanc, ac nes i bwyntiau ymchwil sylweddol a gaiff eu derbyn gan y byd meddygol ynghylch llacio ar yr amseroedd a'r pellterau sydd wedi'u nodi yn y ddeiseb hon gael eu profi, dylid bod yn bwyllog yn hyn o beth.

Dear Sirs

I am writing in response to the letter from the Minister for Environment and Sustainable Development to the Petitions Committee. contained in your e.mail, and dated the 6th. October.

First I would like to thank the Minister for his interest, and the comments made. I would totally agree with his comment, that 'impacts will vary according to local circumstances', however this variation is not predictable, so consideration by LPA or IPC will be guesswork, and by the time the wind turbines are installed the only recourse affected citizens have is to Environmental Health at County Council level. As is evidenced by Blaengwaun, or Alltwallis wind farm. Two years has passed and the issue is still unresolved, nor likely to be, hence the support the Petition received.

This Petition was raised by people concerned about the health impact of the noise created by industrial machinery. TAN 8 is irrelevant to this issue, because the specific positioning of the turbines are not laid down, only a search area where a developer may seek to obtain LPA or IPC approval. Indeed, in practise, the developer only pays heed to the SSA and largely ignores TAN 8's engineering recommendations, as was the case with Blaengwaun/ Alltwallis, and obviously elsewhere, as the First Minister felt the need to ask developers to respect TAN 8 levels in his statement of the 1st June this year. The First Minister has also pointed out that the IPC is not bound by TAN 8 in any respect, so this problem may not be confined to the SSA's. TAN 8 also passes the Environmental Impact Assessment (EIA) directly to the developer. These facts mean that TAN 8, because it has no retrospective powers, is of little use in solving this issue, unless it is amended to require a 2 Km exclusion zone.

In para 4, Mr. Griffiths does not specifically detail the English research he rely's on, if it is Hayes McKenzie, this was dealt with in my evidence to the Petitions Committee, I would agree that the media is often emotive, but they are reporting the experiences of people who suffer sleep deprivation, (even that much is admitted in Hayes McKenzie), it does make the victims emotional and depressed, whether it is Guantanamo Bay or Carmarthenshire.

In para 3 Mr. Griffiths refers to further legislation, I am unaware of any Welsh Assembly Government Legislation on this matter, and as it is a Health Matter and Health is fully devolved, the reason for the petition was to try and suggest effective legislation that would couple World Health Organisation standards, with fair treatment of wind farm developers.

The points I would like Mr. Griffiths to address are:

1) Wind Turbines can easily be turned off, they often are for Commercial reasons, in May last year Alltwallis Wind Farm was turned off over many days, and has been turned off on many occasions since. There are other instances of this, both in Scotland and England recorded in Hansard. The petitioners have never asked for a complete wind farm to be turned off, as the National Grid does on these occasions, only at night and only the turbines that impinge on the health of rural citizens.

2) The National Grid, or other monitoring organisations can produce data which shows the electricity produced at night intermittently by onshore wind turbines is of little use, as it has to be covered by conventional production. There are no recorded instances of the lack of wind energy causing supply to be at risk, so operating turbines unnecessarily is not only retrograde to health, it also is counterproductive to efficiency, which is the most important part of green energy. Energy not produced at night when it isn't needed saves turbine operating hours, to be used when it is needed. Maintenance periods, and mechanical life of

the turbine are extended when they are closed down in periods when they are not needed. The proposal would be cost beneficial to developers

3) This legislation would have zero cost to implement. The savings in Environmental Health budgets will be significant. The existing situation in Carmarthen is not suitable for the problem. The hours which require monitoring are mainly between 22.00 Hrs and 06.00 Hours, Carmarthen Environmental Health do not operate outside office hours. If all the SSA's require Environmental Health operatives on call to monitor and prosecute breaches in an ongoing situation, the cost of implementation will fall on the local Welsh rate payer. If compensation through the grid is adopted the very negligible cost will be shared by electricity consumers throughout the UK, which is only just as the electricity produced in the SSA's is all destined for areas away from the local rural grid.

4) Alternatively, if our Environment and Sustainable Development Ministry were to adopt the Scottish model, rather than the English there would be no need for this measure. DECC have written to me on several occasions claiming that wind farms are widely accepted in Scotland, even in the affected rural areas.

Yours faithfully
James Shepherd Foster

Huw Lewis AC / AM
Y Gweinidog Tai, Adfywio a Threftadaeth
Minister for Housing, Regeneration and Heritage



Llywodraeth Cymru
Welsh Government

Ein cyf/Our ref :HL/5134/12

Abigail Phillips,
Clerk, Petitions Committee
Abigail.phillips@wales.gov.uk

7 February 2012

Deau Abigail

Thank you for the letters from William Powell AM, Chair of the Petitions Committee, of 13 January to me (received on 20 January), and Cadw (received on 23 January), asking for comments on the petition led by Dave Green seeking to save Roath Steam Laundry from demolition.

I think that there may be some misunderstanding about the current position because my officials in Cadw reconsidered the building for listing last August and concluded that it did not meet the criteria and so cannot be listed. I attach a copy of the assessment report which provides the background to that decision (Annex 1) and a brief summary of the role of the Welsh Government in the listing process and an explanation of the listing criteria (Annex 2).

Cardiff Council has responsibility for development control and I understand that the decision on the planning application to demolish the former Laundry and erect a building containing 58 sheltered housing apartments is imminent.

Demolition is a complex area in terms of statutory consents and it may help if I briefly summarise the current provisions concerning heritage consents and planning permission. Conservation area consent is needed to demolish an unlisted building in a conservation area. Cardiff Council has responsibility for determining which of its areas are of special architectural or historical interest, the character or appearance of which it is desirable to preserve or enhance, and to designate those areas as conservation areas. The Roath Mill Gardens conservation area is adjacent to the former Laundry and the Council is best placed to explain why the building was not included within the boundary of the conservation area.

Demolition of a building can fall within the scope of planning control. However, Part 31 of Schedule 2 to the Town and Country Planning (General Permitted Development) Order 1995 confers a permitted development right (a general planning permission) for any building operation consisting of the demolition of a building. This is subject (with some exceptions) to the need for a developer to apply to the local planning authority for a determination as to whether its prior approval will be required to the method of demolition and any proposed restoration of the site. Demolition on land which is the subject of planning permission granted for its re-development is likely to be exempt from the need for such an application to be made to the local planning authority.

There is continuing focus on buildings of local importance which have not met the criteria for listing at the national level, for example, the Customs House and Royal Buildings, Port Talbot, the Vulcan pub, Cardiff, and, of course, this Laundry. It is open to local planning authorities to produce a non statutory list of locally important buildings that have particular resonance in local communities. Local listing itself does not impose a requirement for consent for the demolition of such buildings but it can have validity as a material factor in an application for planning permission, and this is achieved through policies contained within the local development plan. Cardiff Council has a local list but it does not include the former Laundry. The Council is, again, best placed to advise why the Laundry building is not included on the local list.

Separately, you may be interested to know that in the case of the Custom House and Royal Buildings the local authority did not have a local list in place but nevertheless imposed a condition on the planning permission in order to retain some historic character of the existing buildings. The condition itself required that prior to the demolition of the buildings, a scheme for the salvage of architectural features from one or more of the buildings, and plans incorporating such features into the fabric of the proposed development, should be submitted and agreed in writing by the Council.

My officials in Cadw have been looking at preparing guidance to local authorities on the issue of local listing and will now take this work forward as part of the proposed new Heritage Bill for Wales which is included in the Welsh Government's legislative programme for introduction in 2014-15. I will arrange for the issue to be carefully considered as part of the research and discussion I plan to inform the contents of the Bill and associated measures. My aim is to identify the more clearly perceived weaknesses in the current systems and how they might be improved. My officials in Cadw have arranged discussion workshops to scope the proposed Heritage Bill over the coming months and issues around controlling the demolition of locally important buildings will be included as part of the overall review. A formal consultation on proposals for a Bill will begin in 2012-13

I hope that my reply is of help.

Best Regards

Huw

Huw Lewis AC / AM
Y Gweinidog Tai, Adfywio a Threftadaeth
Minister for Housing, Regeneration and Heritage